



**PUBLIC WORKS DEPARTMENT**  
ENGINEERING DIVISION  
156 S. BROADWAY, SUITE 150  
TURLOCK, CA 95380

PHONE: (209) 668-5520  
FAX: (209) 668-5563  
TDD: (800) 735-2929  
engineering@turlock.ca.us

**Date:** 02/26/24

**City Project No.:** 19-48

**Addendum No.:** 4

Plan holders:

**Revisions to Plans and Specifications**

The following additions, deletions or modifications shall become part of the Contract Documents:

Strikethrough text (~~text~~) indicates deletions.

Bold Italicized text (**text**) indicates additions.

---

**Item No. 1:**

Remove and replace Sheet 3 of the Project Plans with the attached sheet.

**Item No. 2:**

Note that the Bid Opening has changed to 2:00 pm on Thursday, March 7<sup>th</sup>, 2024.

**Item No. 3:**

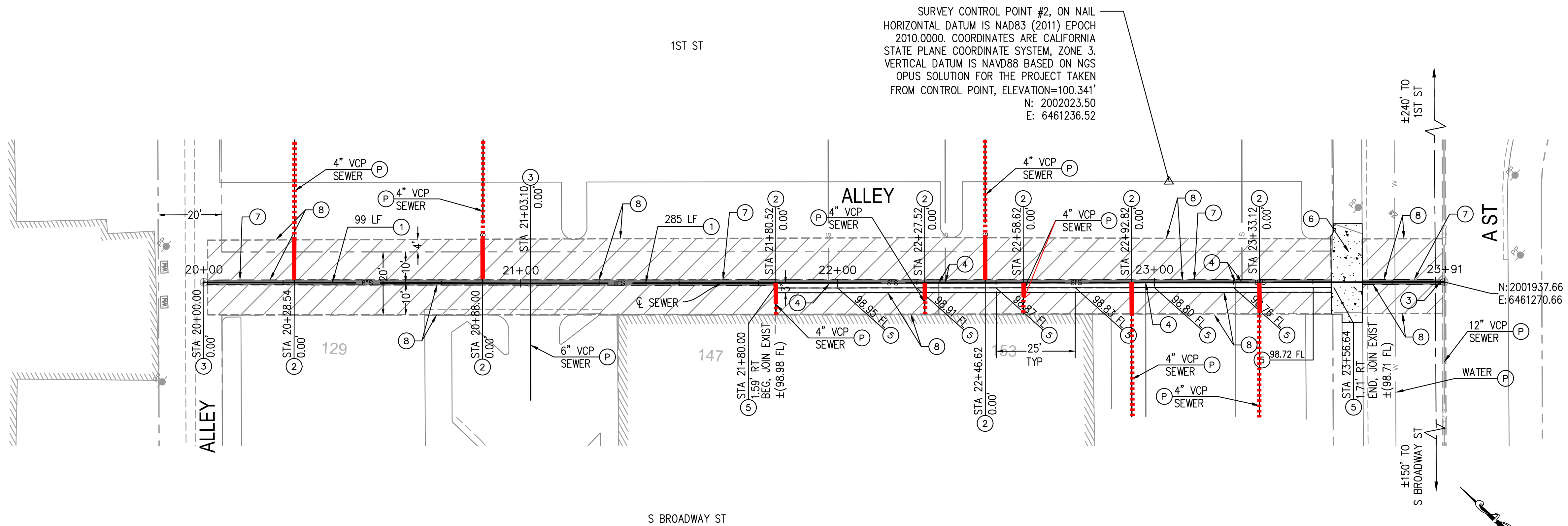
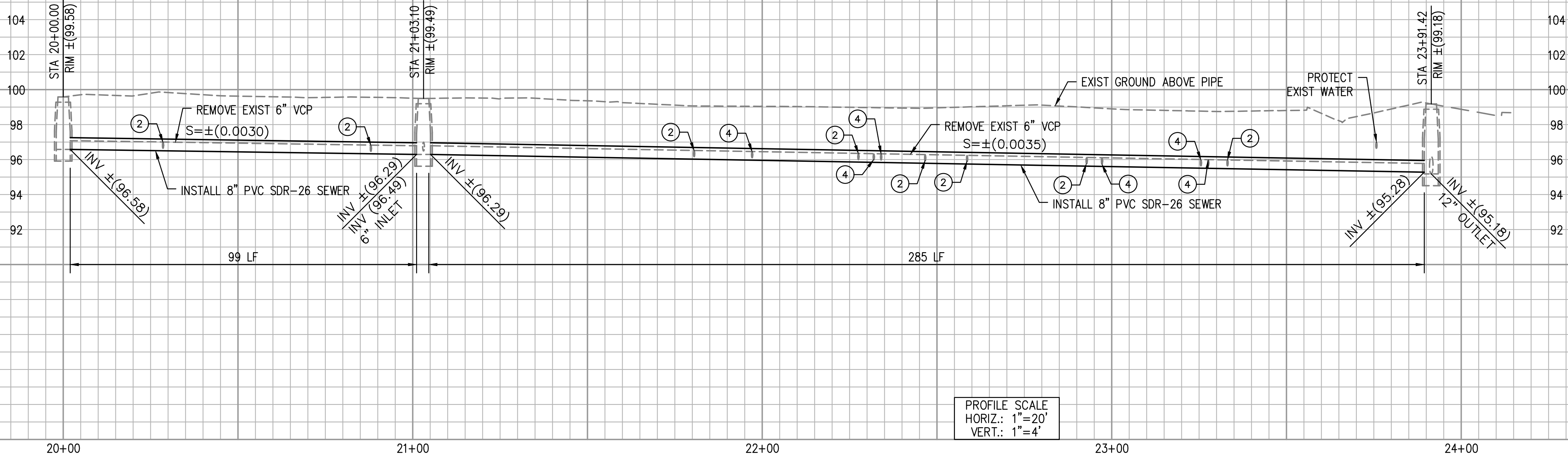
Question: Would the City waive the "Pollution" coverage?

Answer: No, the City will not waive the pollution insurance coverage for this project.

Sincerely,

Oscar Molina  
Assistant Engineer

U:\10217-TURLOCK SEWER\900-PS&E\901-PLANS\PL-SEWR-03.DWG 1/23/2024 10:38:15 AM



#### CONSTRUCTION NOTES:

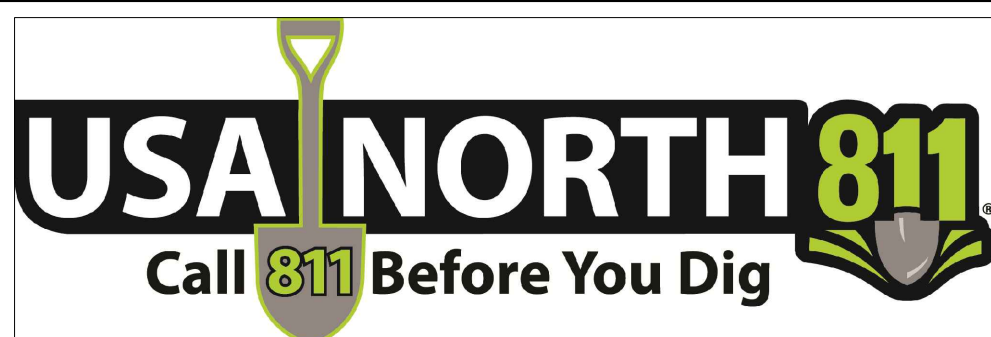
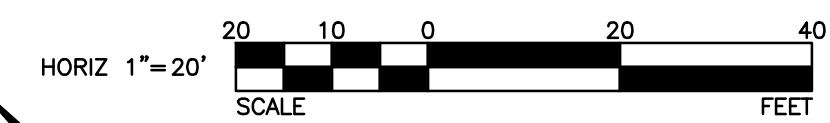
- 1 REMOVE EXISTING PIPE AND INSTALL 8-INCH PVC SDR-26 SEWER.
- 2 RECONNECT EXISTING SEWER LATERAL TO MAINLINE PER CITY OF TURLOCK STD DRAWING NO. S-7 AND SPECIFICATIONS.
- 3 MODIFY MANHOLE BASE TO MATCH INVERTS SHOWN. MODIFICATIONS SHALL CONFORM TO CITY OF TURLOCK STD DRAWING NO. S-3.
- 4 VERIFY THAT EXISTING LATERAL IS PLUGGED AND ABANDON LATERAL BY CUTTING AND CAPPING.
- 5 REMOVE AND CONSTRUCT VALLEY GUTTER PER CITY OF TURLOCK STD DRAWING NO. C-1.
- 6 REMOVE AND REPLACE ALLEY APPROACH PER CITY OF TURLOCK STD DRAWING NO. C-7.
- 7 UTILITY TRENCHING PER CITY OF TURLOCK STD DRAWING NO. T-1, T-2, AND T-3.
- 8 LONGITUDINAL TRENCH PATCH PER CITY OF TURLOCK STD DRAWING NO. T-4.
- P PROTECT IN PLACE.

#### LEGEND:

- UTILITY TRENCHING PER CITY OF TURLOCK STD DRAWING NO. T-1, T-2, AND T-3.
- LONGITUDINAL TRENCH PATCH PER CITY OF TURLOCK STD DRAWING NO. T-4.
- REMOVE AND REPLACE ALLEY APPROACH PER CITY OF TURLOCK STD DRAWING NO. C-7.

#### NOTE:

TEMPORARY SEWER BYPASS PUMPING TO BE INSTALLED IN ACCORDANCE WITH SPECIFICATIONS  
DO NOT INSTALL NEW WYE AND CLEANOUT ON SEWER LATERALS PER DETAIL S-7.



NOTE:  
ALL REFERENCES AND WRITTEN DIMENSION SHALL SUPERCEDE ALL SCALED DISTANCES AND SHALL BE VERIFIED IN THE FIELD. ANY DISCREPANCY SHALL BE BROUGHT TO THE ATTENTION OF THE ENGINEER PRIOR TO THE COMMENCEMENT OF WORK

WILLIAM D. MORRIS, RCE 55910  
CITY ENGINEER  
DATE: 1/23/2024



CITY OF TURLOCK  
PUBLIC WORKS DEPARTMENT  
ENGINEERING DIVISION  
156 S. BROADWAY, STE 150  
(209) 668-5520

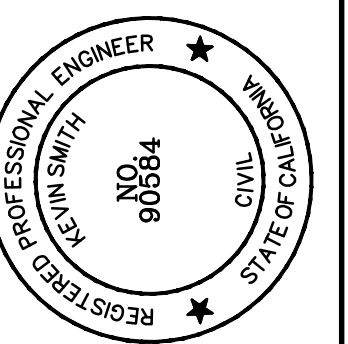
ALLEY BEHIND 147 S BROADWAY STREET  
CAPITAL PROJECT 19-48  
SEWER REPLACEMENT IN ALLEY  
BEHIND 147 S BROADWAY STREET

VERIFY SCALE  
BAR IS 1" ON  
ORIGINAL DRAWING  
1/4" 3/4"  
0" 1/2" 1"  
IF NOT ONE INCH ON  
THIS SHEET, ADJUST  
SCALES ACCORDINGLY

DRAWN BY: AE  
REV. BY:  
CH. BY: TP  
DATE: 1/23/2024  
SCALE: 1"=20'

SHEET  
3  
OF  
3

PLANS PREPARED BY:  
WILDAN Engineering  
2401 EAST KATELINA AVE, SUITE 300  
ANAHEIM, CALIFORNIA 92806  
(714) 978-8200  
UNDER THE SUPERVISION OF:  
KEVIN SMITH, RCE No. 90584  
DATE: 1/23/2024



#### REVISIONS

DESCRIPTION

NO.

DATE

CAPITAL PROJECT 19-48  
SEWER REPLACEMENT IN ALLEY  
BEHIND 147 S BROADWAY STREET